

MADE to MEASURE

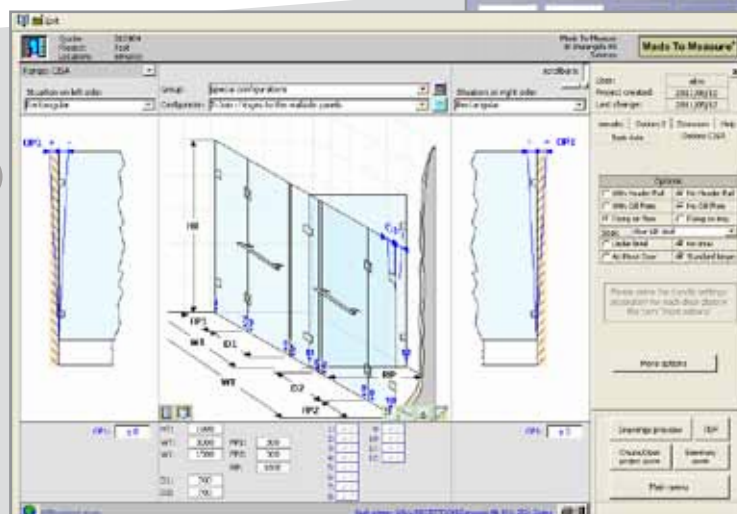
CUSTOM SHOWERS MADE EASY!

CUSTOM FRAMELESS SHOWER DESIGN JUST GOT A WHOLE LOT EASIER

SCHEMATECH'S TECHNICAL SOFTWARE PROGRAM, "MADE TO MEASURE" MAKES EACH STEP IN MANUFACTURING A CUSTOM SHOWER FAST AND PROFESSIONAL

1 DESIGN EVEN THE MOST DIFFICULT OF SHOWER ENCLOSURES

- Choose a patch fitting range from an existing supplier or define your own
- Use our extensive library of shower configurations as a starting point
- Customise your basic configuration to suit almost any on-site requirement.



2 PROVIDE CUSTOMERS WITH DEAL CLINCHING PROPOSALS

- Automatically generate professional and accurate quotations
- Include to-scale 3d-renderings of your shower designs
- Impress customers with detailed specification pages



Figure 2



Top: Start by choosing a basic configuration.
Left: Customise your basic configuration to suit almost any situation

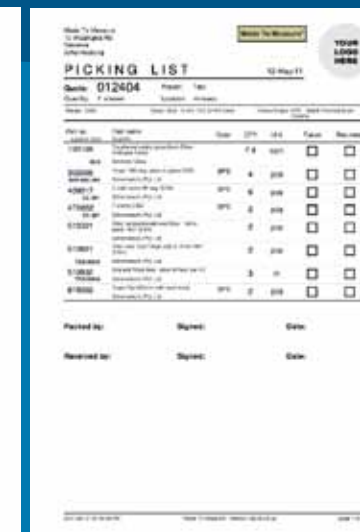
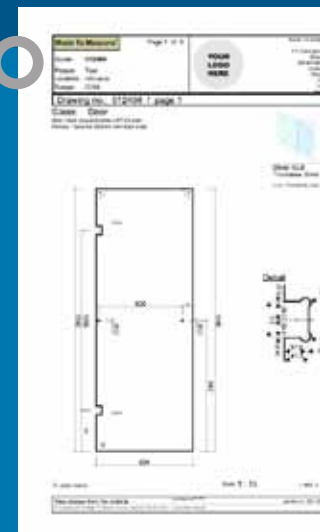
Figure 1



VISIT www.mtmsa.co.za TO SIGNUP FOR A ONE MONTH FREE TRIAL!

3 COMPILE TECHNICAL DRAWINGS AND PARTS LISTS IN AN INSTANT!

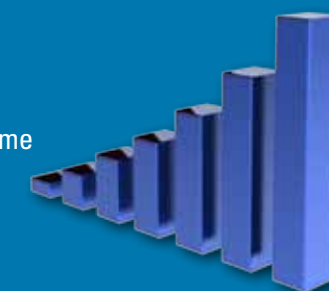
- Send clear and exact glass drawings to glass tougheners straight from Made to Measure in either PDF or DXF
- Rely on manufacturer defaults or use editable parameters to tightly control the deductions applied to glass drawings
- Have all your purchase orders prepared and ready to send as per your own supplier designation
- Rely on our clearly presented picking list to break down where each part is used in the construction of your enclosure



4 GAIN KEEN INSIGHTS INTO YOUR BUSINESS

- Event logging helps you keep track of changes to your projects
- Built in sales reports break down every aspect of a sales representative's performance
- Full Pastel integration (powered by FenyaSoft) allows for accurate forecasting

- Event logging helps you keep track of changes to your projects over time
- Built in sales reports break down every aspect of a sales representative's performance
- Full Pastel integration (powered by FenyaSoft) allows for accurate financial reporting at the project level



	LICENSE FEE	SPONSORSHIP
Single User	R1,000 per month	Contact us to find out how buying your glass or hardware from participating companies can qualify you to get Made to Measure for free!
Multi User (up to 5 concurrent users)	R2,000 per month	



*the finished product
all 120 rooms of the
One and Only Hotel at
the V&A Waterfront
designed on Made to
Measure*

SAFETY FIRST

Made to Measure checks each shower design automatically and makes suggestions based on broadly accepted industry safety standards.

Tel: 011 452 7515
Fax: 086 602 4897
Email: info@mtmsa.co.za

**PROUDLY REPRESENTED
ON MADE TO MEASURE**



Figure 1: Customer quotation

Figure 2: to-scale 3d-rendering automatically appends to the customer quotation.